



Dear Parents and Carers,

This week at Willow Bank children in Hornbeam Class enjoyed a visit to our local library, The Nest ,where they were able to explore the books and learn about our local area from a talk from a local historian. The children were excellent ambassadors for the school.



The children have been enjoying playing with the new playground equipment at lunchtimes. We have also introduced a range of board games to be played on the picnic benches which have also been very popular!

Our wonderful lunchtime Playleaders have settled straight back into their roles this term supporting younger children in the lunch hall to cut up their food and keep the hall tidy and clean. On the playground they play games with the children to encourage everyone to have happier, healthier lunchtimes. Thank you to Miss Jones and Miss White for overseeing the Playleaders and providing training and guidance.

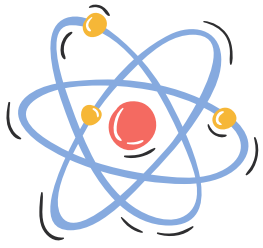


Today we had our first presentation panel meeting of the new academic year! The children and I spent time looking at books across the school to see whether any children have earned their pen licence. We were looking for joined, cursive handwriting and high standards of presentation in all books.

If your child is in Years 1 -6, they will be bringing home a list of spellings to learn every week for a class quiz. Please spend time helping your child learn their spellings e.g. in the car, waiting for a bus, and seeing whether they can use the word in a sentence. Your support really makes a huge difference to your child's confidence and progress.

Wishing you all a wonderful weekend.

Best wishes,
Mrs Oldfield and the WBP Team



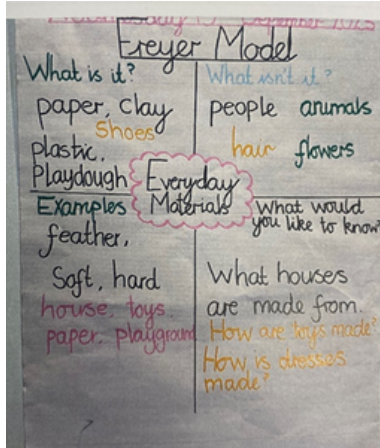
SCIENCE



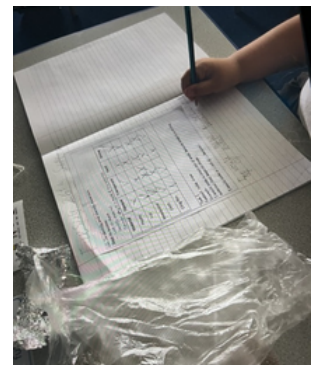
Year 1

Year 2

This term in Science we will be exploring materials. We had a class discussion to explore what we already know about materials and their property and what we want to find out. We especially wanted to know what toys and playdough are made out of and its properties.

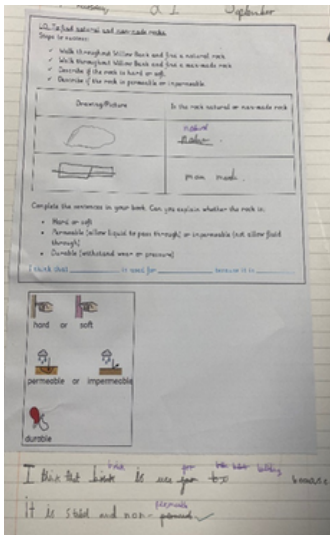


This half term our topic is Everyday Materials. We have been naming and sorting these materials. We have also explored properties and how they can be used. We are looking forward to investigating which material suits which purpose and why!

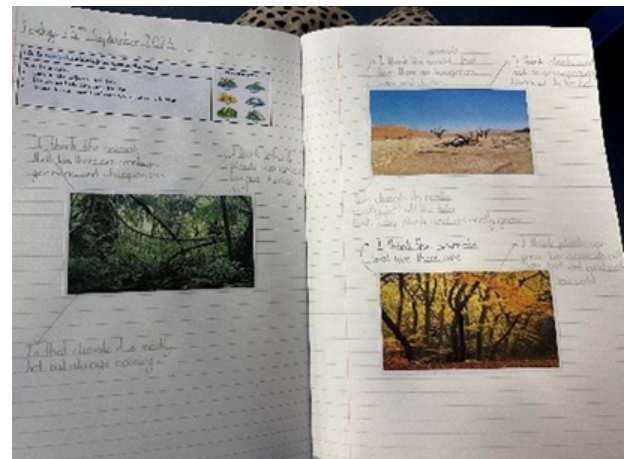


Year 3

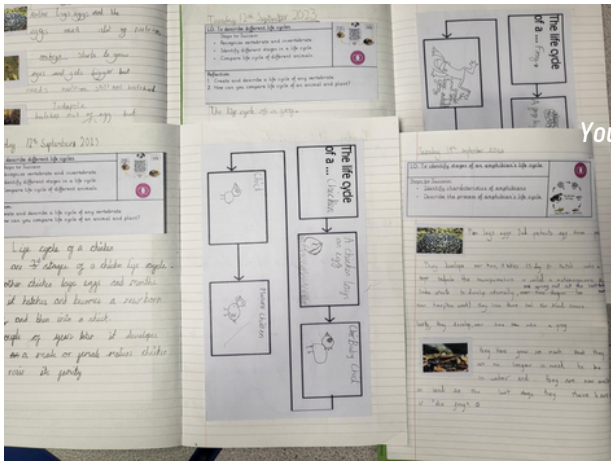
Year 4



In Year 4, we have been looking at different habitats and how animals may have to adapt themselves to survive in that area. We explored living things (organisms), identified how they share certain characteristics and how they all do certain things to stay alive (we call this life processes). We grouped different animals using a Venn diagram based on the different characteristics.



In year 3 the children have been learning about the three different types of rocks. Igneous, sedimentary and metaphoric. We have been classifying different rocks based on their characteristics.

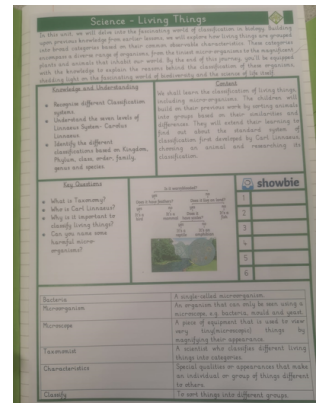
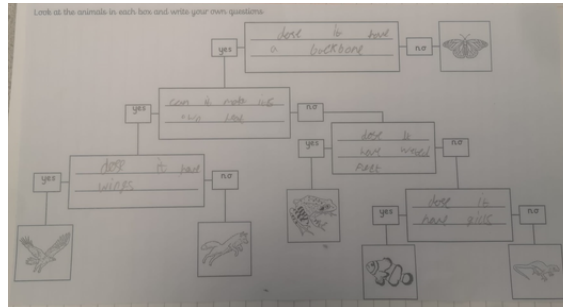
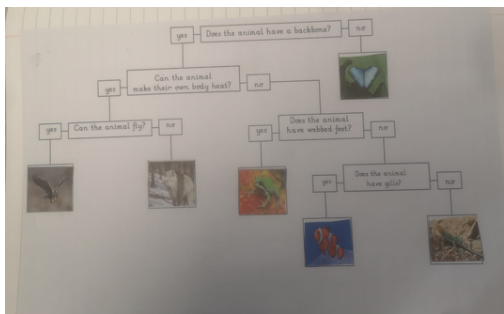


Year 5

Children in year 5 are investigating the different stages of an animal's life cycle. They are also exploring the similarities and differences between the life cycles of reptiles, amphibians, and mammals.

Year 6

In Year 6, students embarked on an exciting exploration of Living Things, with a focus on the pioneering work of Carl Linnaeus. They discovered the art of classification, learning how to group and categorize different animals based on shared characteristics. Through engaging lessons and hands-on activities, these young learners not only unlock the secrets of Linnaean taxonomy but also gain a deeper appreciation for the wondrous diversity of life on Earth.



We are so excited to announce that we will be back holding our popular football camp this October half term at Northumberland Heath Primary school. As well as announcing the GRAND OPENING of our Multi sports camp which will also be starting this October and be held at Limewood Primary school. All details are shown on the leaflet attached below. With new amazing deals and offers which you don't want to miss. To sign up please drop us a message or email, we look forward to seeing you all there!

Please contact me on:
 Phone - 07539 016184
 Email - little.achievers@outlook.com

October Half Term FOOTBALL COURSE
 23-27 Oct | 10am-3pm
 BOYS AND GIRLS 5-13 years All abilities
 £45 per week or £15 a day
 • Woodland Academy Trust discount
 • Sibling discount (non trust members)
 Friday Funday!
 Sam Cassell
 07539 016184
 Little.Achievers@outlook.com
 Northumberland Heath Primary School, Wheelock Close, Erith, DA8 1JE (Brook Street entrance)

October Half Term MULTI-SPORT COURSE
 23-27 Oct | 10am-3pm
 BOYS AND GIRLS 4-13 years All abilities
 £45 per week or £15 a day
 • Woodland Academy Trust discount
 • Sibling discount (non trust members)
 Friday Funday!
 Sam Cassell
 07539 016184
 Little.Achievers@outlook.com
 Limewood Primary School, 2 Sandy Road, Erith, Kent, DA8 1FJ



Don't forget that your child should be reading with you every day at home and sign in the diary when you have done so. It is helpful to write which page they have read up to and maybe even a short comment on how well they did with reading/answering questions. Adults will be checking reading records everyday.

EYFS and KS1 Parent Reading Morning
Every Thursday from 8:40-9:10am



All parents and carers welcome!

We are looking for Read with Me volunteers at Willow Bank! These volunteers will visit our EYFS, KS1 and KS2 classrooms and listen to our children read. If you are interested in volunteering with us for 30 minutes or an hour each week, then please pop into the office to express your interest and pick up our application pack.

Well done to:	Our target is over 96%
Magnolia - 93%	Yew - 94%
Hornbeam - 92%	Redwood - 95%
Laburnum - 91%	
Hazel - 94%	★ Walnut - 96%
Larch - 88%	★ Sycamore 98%



Well DONE

Key Dates

Next week:

Monday 02/10/2023 - 3:30pm-4:15pm Y5

Macbeth Cinema

Tuesday 03/10/2023 - 10am-10:30am New

Reception 2024 Open Morning.

Every Thursday morning- Y5 Swimming

Forthcoming dates:

TBC

	1	2	3	4	5
	7	8	9	10	11
3	14	15	16	17	18
0	21	23	24	25	26
7	28	29	30	31	



Willow Bank Primary School



Tuesday 3rd October
 Tuesday 7th November
 Tuesday 5th December
 Tuesday 9th January

10:00 - 10:30 am
 Please confirm your attendance by calling or emailing the school office

0208 320 1900
 wbpoffice@watschools.org.uk

We look forward to welcoming you on a tour of our school and meeting members of the Willow Bank team

