



Dear Families

It has been another busy and exciting week in school, with lots happening both in classrooms and around school.

Year 2 and Year 3 have enjoyed their trips, and there has been some fantastic learning taking place across all year groups. Year 5 have been fully immersed in their topic on the solar system and have been incredibly proud to share their work with me.



Year 2 visited the Museum of London Docklands and took part in a brilliant workshop all about life in the past and how London has changed over time. They explored a range of galleries, including the interactive areas, and were all very eager to tell me about their favourite parts of the trip when they returned to school.

Year 3 enjoyed a visit to *Pompeii London: The Immersive Experience* at ExCeL. The children were captivated by the life-size reconstructions, interactive storytelling, and stunning visual effects. They returned to school full of excitement, sharing facts they had learned about the eruption of Mount Vesuvius which impacted Pompeii town. I am sure they will have plenty to tell you at home as well!

Looking ahead, we have Parents' Evening on **Wednesday 4th February** and **Thursday 5th February**. Booking will open today. Please look out for a message from Arbor with instructions on how to book your appointment. If you experience any difficulties reserving a slot, please pop by the school office and a member of staff will be happy to help. I look forward to seeing you all on those days. Teachers will discuss your child's progress, next steps in learning, and you will also have the opportunity to look through a selection of your child's books.



We will also be celebrating **Children's Mental Health Week** in the final week of term. As part of this, **Friday 13th February** will be a non-uniform day where children are encouraged to wear bright colours or clothes that make them feel happy. This is a lovely opportunity for pupils to express themselves and to highlight the importance of wellbeing.

Thank you once again for your continued support and partnership in your children's learning. It is wonderful to see how engaged, enthusiastic, and curious the pupils have been this term, both in their classroom learning and during their educational visits. We are very proud of everything they are achieving.

Your sincerely

Mrs Beresford and the Willow Bank Team



## Year R

In Magnolia class we have been looking at exploring and understanding numbers to 7. We have been looking at different ways we can represent the numbers using different resources.



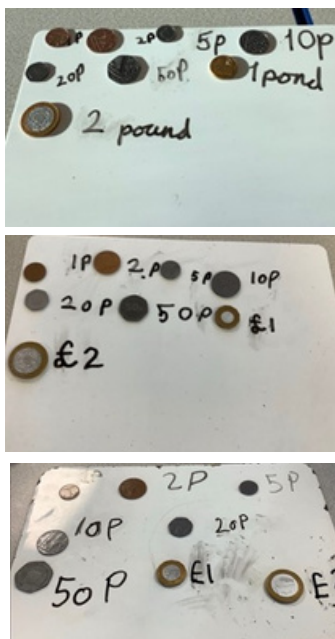
## Year 1

Year 1 are continuing to use manipulatives to help us with our maths learning, including ten frames, beads and number lines. Here children are using cubes to show one more and one less!



## Year 2

In Year 2, children have been learning to work with money by learning to recognise and identify different coins, such as 1p, 2p, 5p, 10p, 20p, 50p, £1 and £2. They practise naming each coin and understanding what its value represents, before recording these values in writing using numbers and symbols.



## Year 3

This term, children in Year 3 are learning about multiplication and division and are deepening their understanding through practical activities, and problem-solving. They are developing key skills such as recalling times tables, grouping and sharing, and using different strategies to solve calculations.

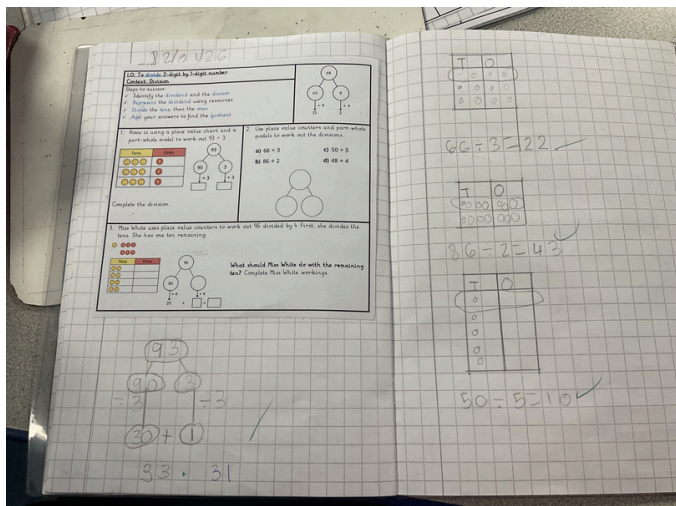






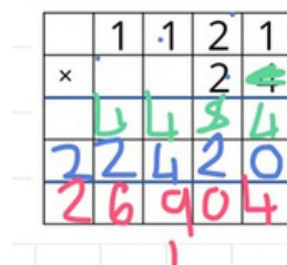
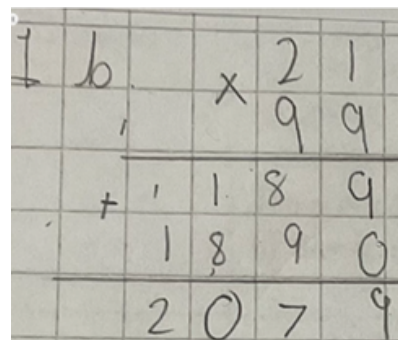
## Year 4

This month, children are happily learning to divide two-digit numbers by one-digit numbers, building confidence through models, strategies, and practice.



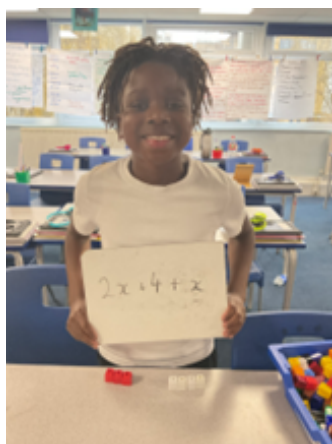
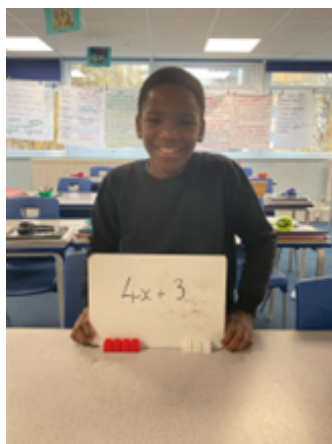
## Year 5

In Year 5 maths, we've been busy strengthening our multiplication and division skills. Pupils have explored times tables, practised written methods, and solved real-life word problems to explain their thinking. We have also been using Magma Maths to embed our learning, giving children opportunities to practise, reflect and deepen their understanding.



## Year 6

In maths, Year 6 have begun working on algebra. This week we have been learning how to form expressions, using cubes to represent the unknown.



## CAN YOU HELP?

### Kind Donation Request:

A small dolls house (with furniture/dolls) for our Speech & Language Team. Please contact the school office if you can help. Thank you!





## EYFS & KS1 Parent Reading Morning

Every Thursday from 8:40-9:10am

All parents and carers welcome!



We are looking for Read with Me volunteers at Willow Bank! These volunteers will visit our Yr 1 & 2 classrooms and listen to our children read.




If you are interested in volunteering with us for 30 minutes or an hour each week, then please pop into the office to express your interest and pick up our application pack.



OUR CORE VALUE FOR SPRING TERM 1 IS  
KINDNESS



Our attendance target is to reach over 96%

Magnolia - 99.5% 	Yew - 97%
Hornbeam - 97%	Redwood - 99% 
Almond - 98	Hazel - 93%
Larch - 97%	

## School Reminder

Children should not arrive earlier than 8.20am for Breakfast club, this runs from 8.25am - 8.35am. School gates close at precisely 8:50am. After this time, entrance is via the school office and parents will need to sign your child/children in using the screen.

## A reminder that we have our Chance To Chat.

As a school we provide ongoing support for the children's wellbeing and mental health to which one of the methods is they can fill out a form while in school to express their worries. The form then gets placed in the 'Chance to chat' box where it will be addressed by the wellbeing team.

We also have an online form which is located on the school website named 'Chance to chat'.

The children can complete the form if they are worried about something or need some advice? A member of staff will get back to the child at school.

Please copy the link below and paste in the search bar and it will direct you straight to the form.

<https://forms.office.com/pages/responsepage.aspx?id=MvrWB2Z-r0qnuEuN-giOI1CAPQc0X4RFje43giTliLNUOE5BWUFISE40VjBXODZYRVFITLNXVzZYNCQLQCN0PWcu>

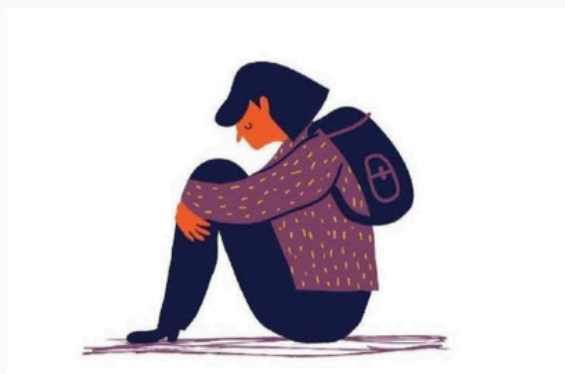


[www.bexley.gov.uk](http://www.bexley.gov.uk)

## EMOTIONAL BASED SCHOOL AVOIDANCE (EBSA) PARENT/CARER SUPPORT GROUP

To take place on: **Thursday 12<sup>th</sup> February 2026 1pm-2.30pm**

Venue: **Bexleyheath Central Library in the Dickens Room.**



*Bexley Educational Psychologists are providing parent/carers the space to share their experiences, hear from others and gain support as part of a network for those supporting children and young people who are experiencing anxiety-related difficulties around attending school (including Emotional Based School Avoidance).*

If you are interested in joining, please email:

**[parentebsasupport@bexley.gov.uk](mailto:parentebsasupport@bexley.gov.uk)**





## London South East Children's University January 2026 Challenges

Welcome to 2026! I hope you and your family enjoyed the festive season and are ready for the new year!

This month's challenges are all linked to World Lego Day, which is on 28<sup>th</sup> January, but you can use any building blocks or similar items, so please do not worry if you don't have Lego.

You can choose to complete as many of these challenges as you wish – simply email your evidence (a photo is absolutely fine!) to Louise at [Bexley.CU@Bexley.gov.uk](mailto:Bexley.CU@Bexley.gov.uk) and she will send you your stamp code!

### Design a new Lego figure/character

For this challenge, I would like you to create your own Lego figure/character! You can either create it in 3D or you can draw a picture of it if you would prefer!

### Take part in a Lego Club at Bexley Libraries

Did you know that Bexley Libraries run Lego Clubs across Bexley? These are free to attend and you can find out where and when your nearest club is via this link:

<https://arena.yourlondonlibrary.net/web/bexley/lego-club>

### Build a 3D landmark

For this challenge, I would like you to build a 3D model of a landmark of your choice from across the world!

For example, you could build the Tower of London, the Houses of Parliament, the Taj Mahal, the Sydney Opera House or the even the Empire State Building! The choice is yours!!!



### Create your name in Lego

This challenge involves creating your name using Lego! You will need to build each letter using bricks (you can do one letter at a time if you run out of bricks!)



**CHARLTON SCHOOLS PARTNERSHIP SCHEME**  
**ATHLETIC**

**CLAIM YOUR CHILD'S FREE MEMBERSHIP TODAY!**

**SCAN THE QR CODE**